

REVIEW FOR 1st SIX WEEK TEST

from TEXT BOOK

p. 132 #1-20

① $y = 2x - 7$
 (14, 21)
 $21 \stackrel{?}{=} 2 \cdot 14 - 7$
 $21 \stackrel{?}{=} 28 - 7$
 $21 = 21 \checkmark$
 yes

② $y = 2x - 7$
 (3, 13)
 $13 \stackrel{?}{=} 2 \cdot 3 - 7$
 $13 \stackrel{?}{=} 6 - 7$
 $13 \neq -1$
 No

③ $y = 2x - 7$
 (10, 13)
 $13 \stackrel{?}{=} 2 \cdot 10 - 7$
 $13 \stackrel{?}{=} 20 - 7$
 $13 = 13 \checkmark$
 YES

④ $y = 2x - 7$
 (1.5, -4)
 $-4 \stackrel{?}{=} 2(1.5) - 7$
 $-4 \stackrel{?}{=} 3 - 7$
 $-4 = -4 \checkmark$
 yes

⑤ $c = 1.15a$
 $c = 1.15(35.20)$
 $c = \$40.48$

⑥ $c = 1.15a$
 $c = 1.15(40.00)$
 $c = \$46.00$

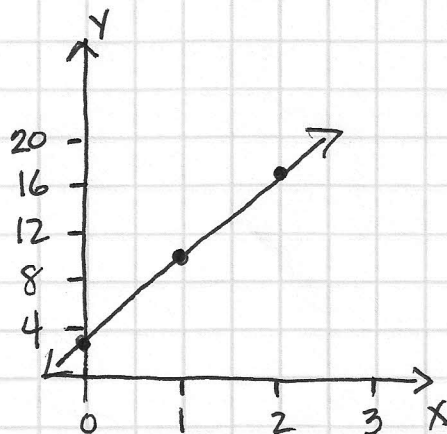
⑦ $c = 1.15a$
 $c = 1.15(22.35)$
 $c = \$25.70$

⑧ $c = 1.15a$
 $c = 1.15(15.50)$
 $c = \$17.83$

- ⑨ (3, 2) Quad I
- ⑩ (0, -4) Quad → none
- ⑪ (-4, -3) Quad III
- ⑫ (-2, 3) Quad II
- ⑬ (0, 0) Quad. → none
- ⑭ (6, -2) Quad. IV

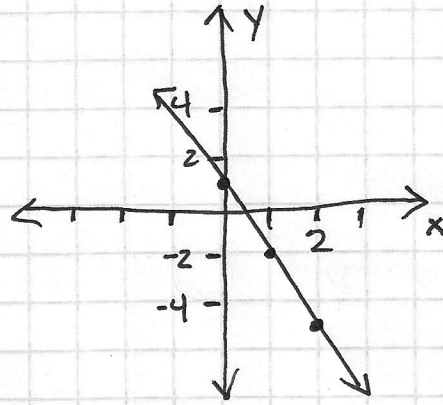
⑮

x	7x+3	y	(x, y)
0	7·0+3	3	(0, 3)
1	7·1+3	10	(1, 10)
2	7·2+3	17	(2, 17)



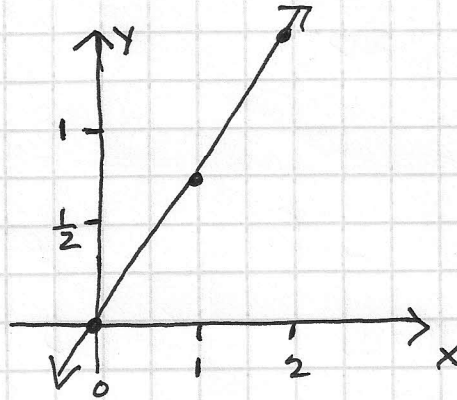
16

x	$-3x+1$	y	(x,y)
0	$-3 \cdot 0 + 1$	1	(0,1)
1	$-3 \cdot 1 + 1$	-2	(1,-2)
2	$-3 \cdot 2 + 1$	-5	(2,-5)



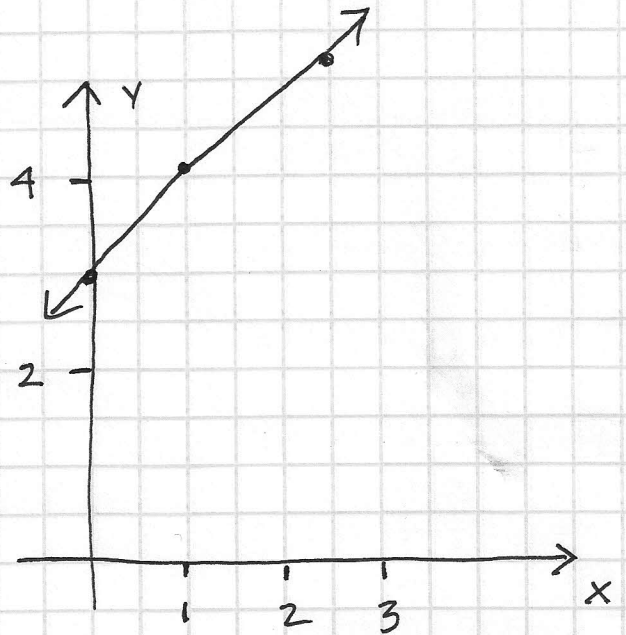
17

x	$\frac{3}{4}x$	y	(x,y)
0	$\frac{3}{4} \cdot 0$	0	(0,0)
1	$\frac{3}{4} \cdot 1$	$\frac{3}{4}$	(1, $\frac{3}{4}$)
2	$\frac{3}{4} \cdot 2$	$\frac{3}{2}$	(2, $\frac{3}{2}$)



18

x	$1.2x+3$	y	(x,y)
0	$1.2(0)+3$	3	(0,3)
1	$1.2(1)+3$	4.2	(1,4.2)
2	$1.2(2)+3$	5.4	(2,5.4)



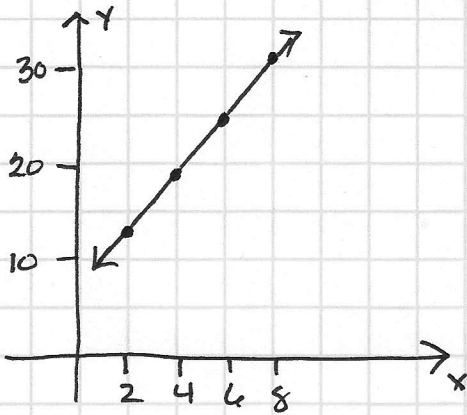
19 Graph 3

20 Graph 1

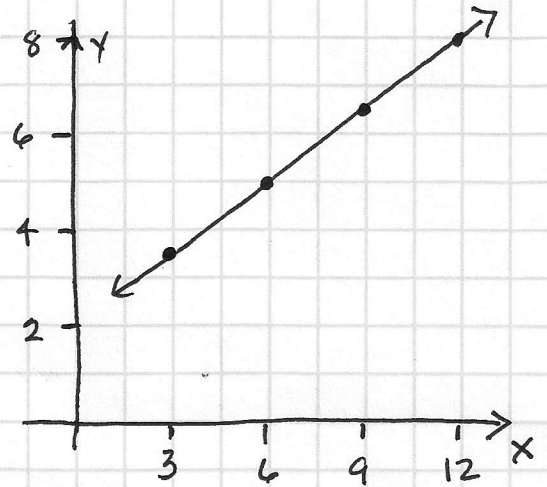
Review for 6 week TEST:

from TEXTBOOK p. 146 #9-20

(9)



(10)



(11)

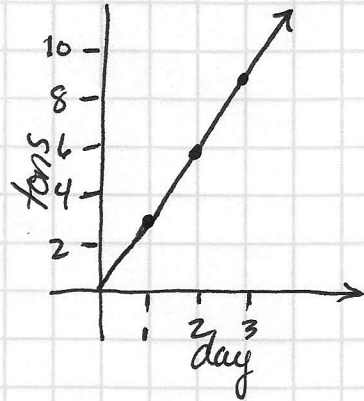
x	y
0	-2
2	1
4	4

(12)

x	y
-2	-4
0	0
2	4

(13)

d	p
1	3
2	6
3	9



(14) 14

(19) 1.6

(15) 0

(20) $p = 5t - 350$

(16) 4.5

$p = 5(93) - 350$

(17) 0

$p = \$115$

(18) 9

